

Ice House Court Studios

London, England

Architects → Delvendahl Martin Architects

Location → 56 Abbey Road, Barking,

London IG11 7BT, England

GFA → 470 sqm

Completion → 2016

Client → Bow Arts Trust

Inspired & inspiring → art

Main materials → timber, concrete, glass

www.dm-architects.co.uk

The creation of studio spaces for up to 25 artists in a new mixed-use neighborhood in Barking involved the fit out of an existing shell and core commercial space on the ground floor of a residential block. The site required a design response that balances the desire for public interface and interaction with the need for a degree of privacy associated with creative practice. Responding to the existing fully glazed façade, the primary intervention was a new timber screen and shelving system lining the perimeter of the spaces that provides a sense of continuity and rhythm throughout the studios, whilst simultaneously enabling the artists to embrace the shop front nature of the façade to display their work. In response to the limited project budget, the design relied entirely on standard and readily available components and materials. The color-stained timber profiles of the shelving system and white plywood panels also double up as a partitioning system, balancing a warm color palette against the raw concrete walls and floors. Bright yellow painted walls and floors demarcate the shared areas and highlight the two entrances in the otherwise homogenous elevation of standard glazing components. The project helps to retain artists in London with the Barking Artist Enterprise Zone delivering affordable, sustainable and flexible workspaces and homes for the benefit of the city's economy whilst also ensuring Barking's full potential is unlocked.

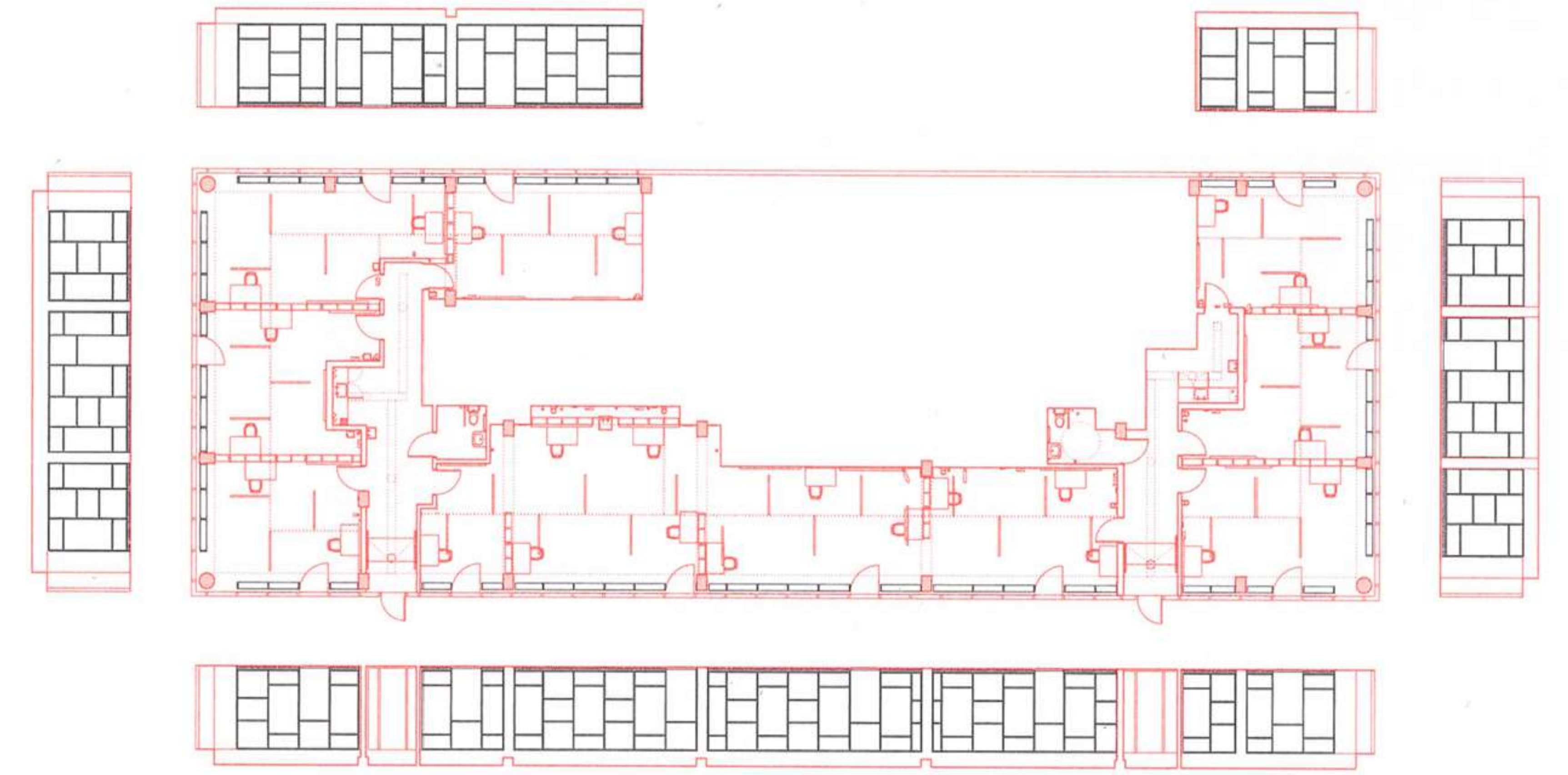
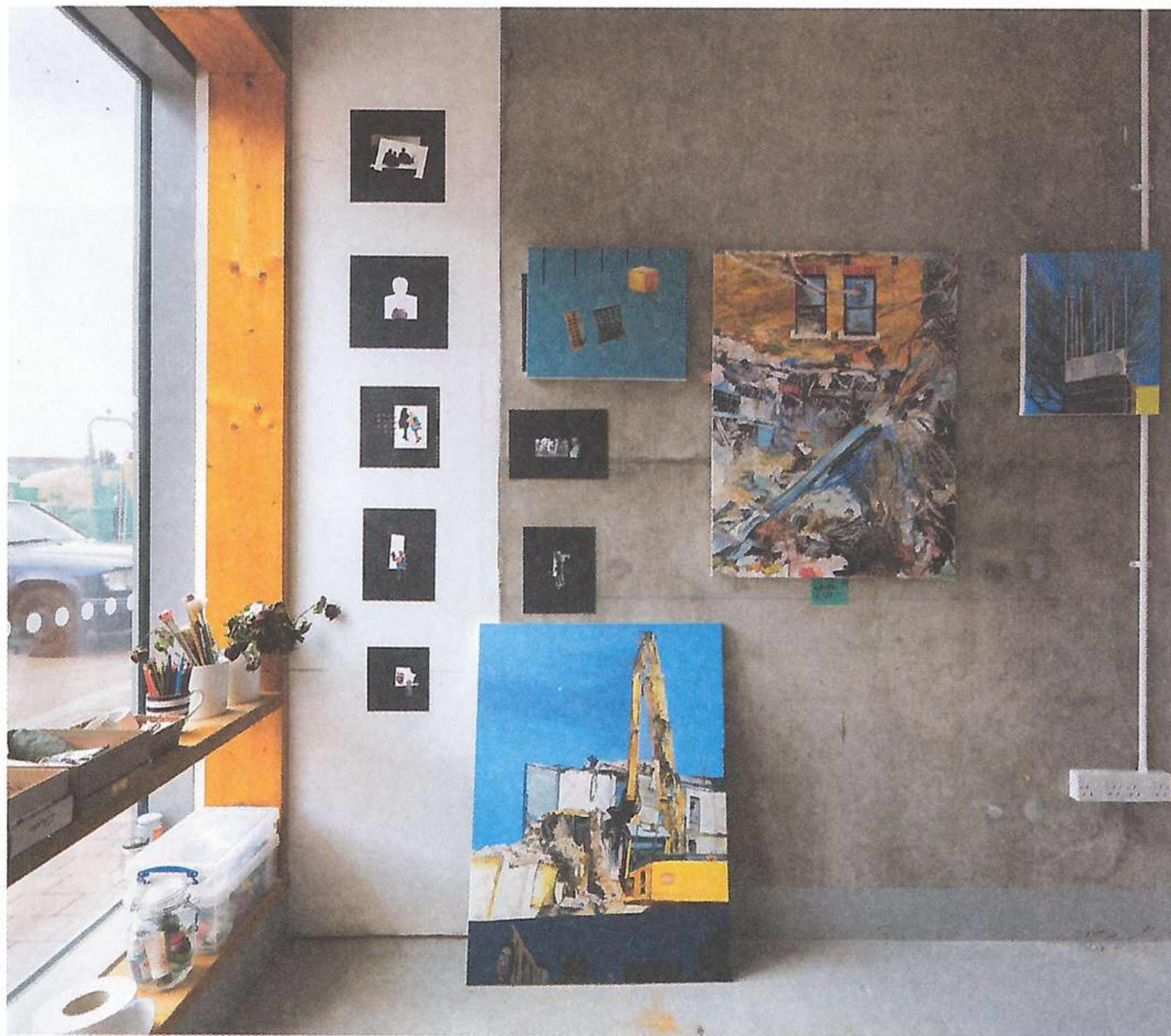


123/208



↑↑ Each artist can customize his studio individually and make it his own space.

↑ Detail of the ceiling and the timber shelving.



↑↑ Through a private entrance, each room can be entered from the street.

↑ The art contrasts sharply with the raw concrete walls.

↗ Ground floor plan of the Ice House Court Studios.

→ The studios are based in the new Ice House Creative Quarter in Barking, London.

