



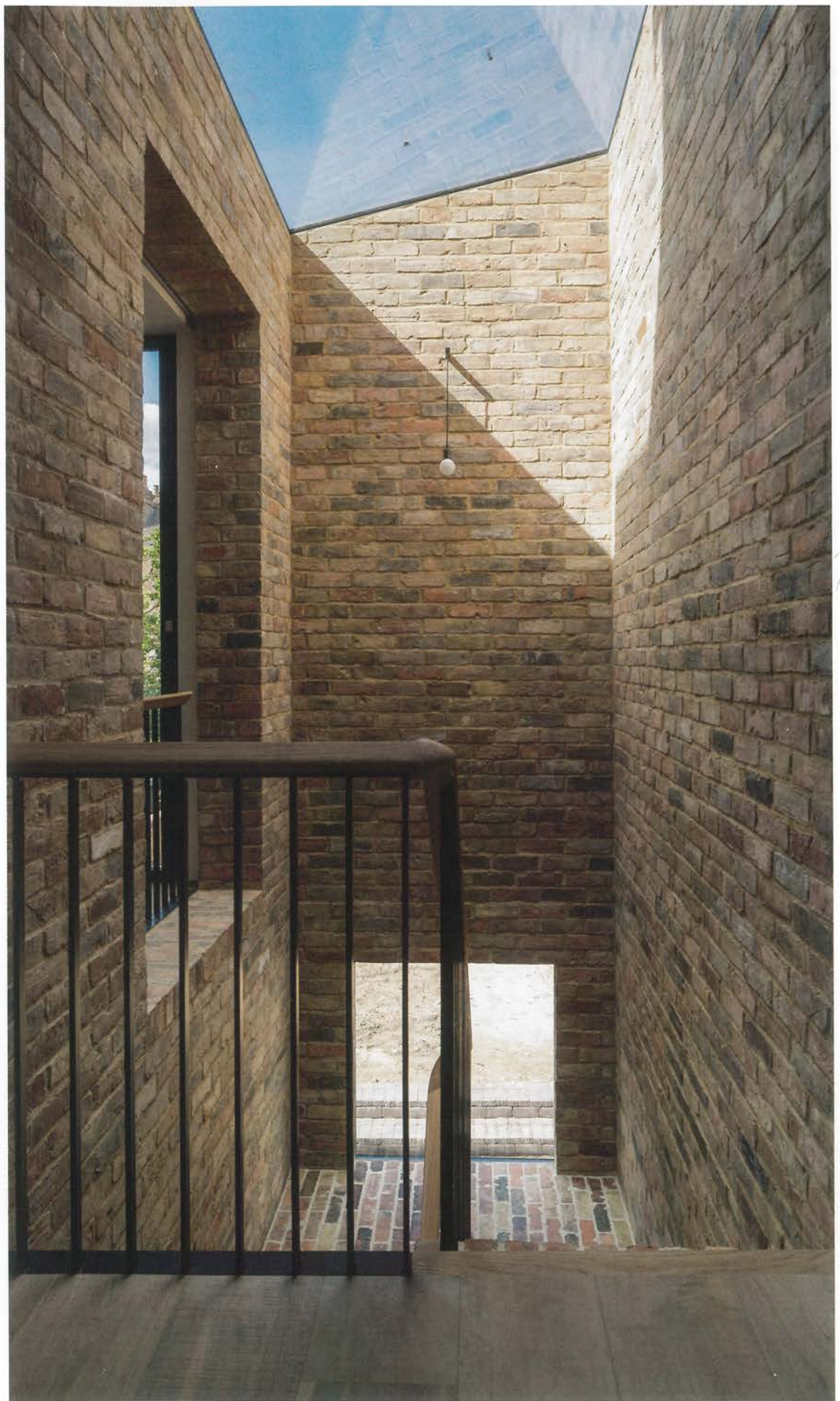
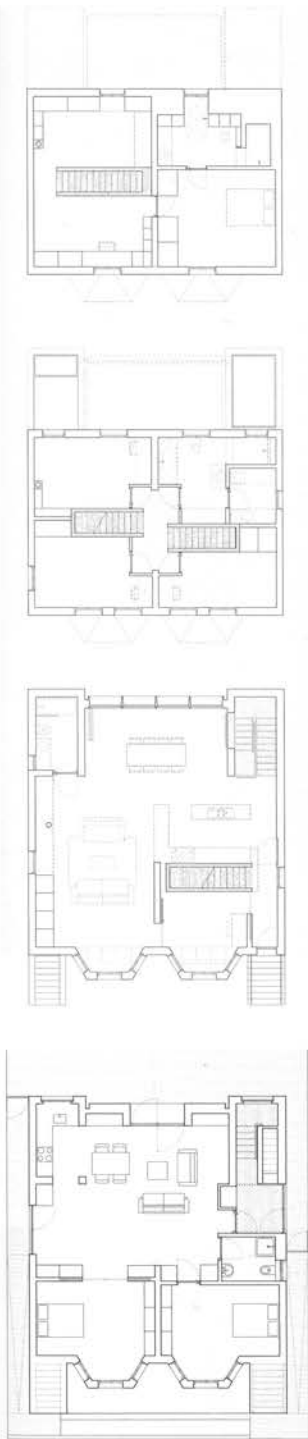
DELVENDAHL MARTIN ARCHITECTS SEMI-DETACHED

Delvendahl Martin Architects has converted a pair of semi-detached Victorian houses sited in a central Oxford conservation area into a single family home. Located in the centre of the plan perpendicular to the original party wall is a new timber staircase, which is used to help unite the two properties. The existing symmetrical internal layout is thereby rotated to achieve a continuous

flow of spaces on each floor. A second staircase – constructed using recovered bricks from the demolition works – together with a loggia that is accessible from the kitchen and main living room, accommodate the level change from entrance to back garden.

The loggia, which is built using materials of contrasting colour to the original houses,

occupies a rear extension between the outriggers. The architect's intention is to unite the two houses visually, while clearly signalling the rear structure as a new addition. A glass screen at first-floor level can be fully opened, making the kitchen and dining space feel like an elevated garden terrace. The facade is articulated by a series of deep anodised aluminium blades that ▶



- △ Lower-ground, ground, first- and second-floor plans.
- ▷ A glass roof illuminates a brick-lined stairwell located at the rear of the plan.
- ◁ A large brick and glass rear extension containing the main living spaces visually and spatially unites the semi-detached houses into a single family home.



filter the daylight and mitigate overlooking to the adjacent houses.

All the fitted furniture and most of the fittings, including the lights, door handles and handrails, are bespoke designed. "These highly refined details were central to the design and were achieved by collaborating with specialist trades" says Nikolai Delvendahl. "Through exploring the crafting

of materials, a number of versatile components were created to act as a thematic link throughout the house. This is most notable in the handrails and door pulls, whose profiles have been carefully elongated, rotated and/or twisted to suit each application. Elsewhere, reclaimed materials are balanced with the new insertions to create a simple yet refined palette." □

- △ Folding-sliding glass doors allow the first-floor kitchen and dining space to be opened up to the garden aspect.
- ▽ Second-floor study/office with central timber-lined staircase.

- Architect, ironmongery Delvendahl Martin Architects structural engineer Price & Myers contractor Sporn Construction glass Glass UK insulation National Building Technologies lighting Terence Woodgate bricks reclaimed, Wienerberger frameless glazing, glazed doors, Skylights Glass UK sash windows George Barnsdale timber flooring SolidFloor sanitaryware Duravit photos Tim Crocker.
- Floor area 350 sqm form of contract JCT Intermediate.



